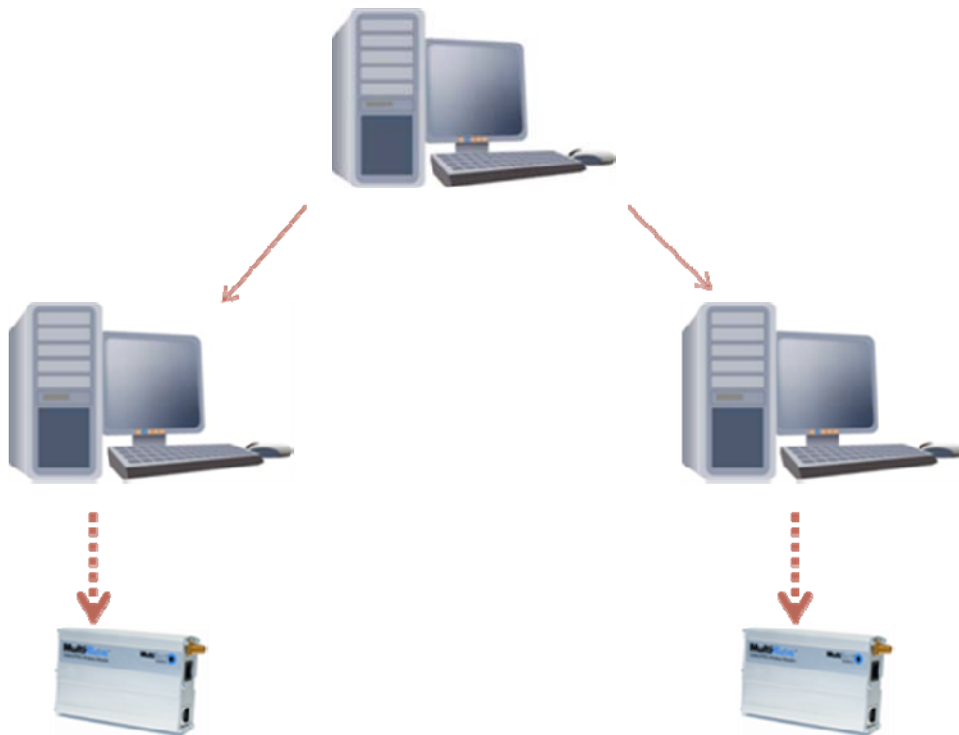


How to configure dual server functionality

## **SysManSMS Server**



### **The high quality mobile solution:**

- Secure internet-free solution using direct GSM connection
- Easy integration with applications - 2-ways capabilities
- Send messages from clients, files, mails or sdk on your LAN
- Text Filters to limit, convert or priorities sending of messages
- Full message delivery control with auto re-route if problems
- Dual-server support with auto failover and re-send
- Number Files to define mobiles and schedules
- Remote controlling Services and Programs
- Monitor Services – alert if stops
- Watchdog monitor Server

## CONFIGURE DUAL SERVER FUNCTIONALITY

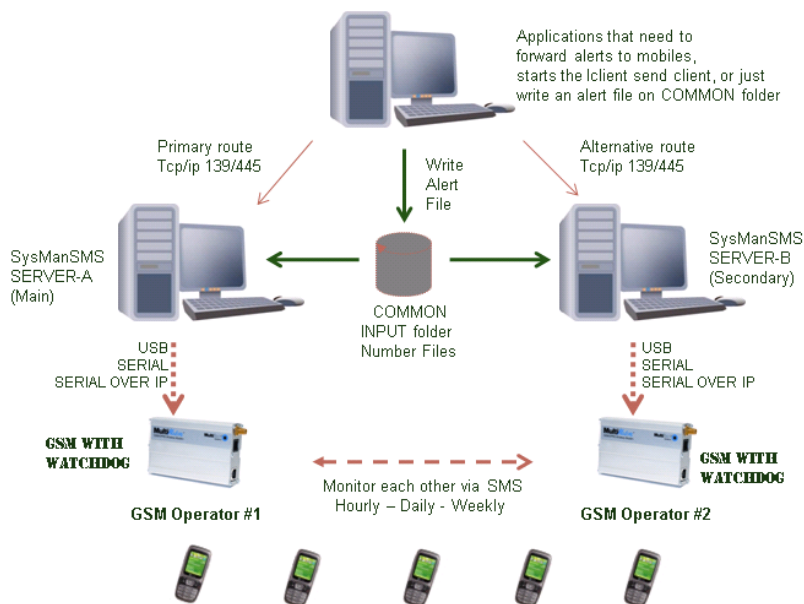
### BACKGROUND

For installations requiring the highest availability, SysManSMS Server architecture support two complete installations to share data and do failover if one component in a chain fails.

Any SysManSMS client request will then be able to first try the defined primary server, and if this fails, it will automatically re-connect to the alternative server for sending SMS's.

Message INPUT folders, Number Files and SMS StormDB can be shared between servers. This will then show up as "one" SMS gateway resource, with double capacity and failover.

The two independent servers will also look after each other by sending SMS to each other, which will reset a keep-alive timer. As soon as one server fails to reset its timer, the other will send Administrators SMS alerts to inform you that one server is out of function.



A complete Dual Server configuration

### BEFORE YOU CONFIGURE A DUAL SERVER

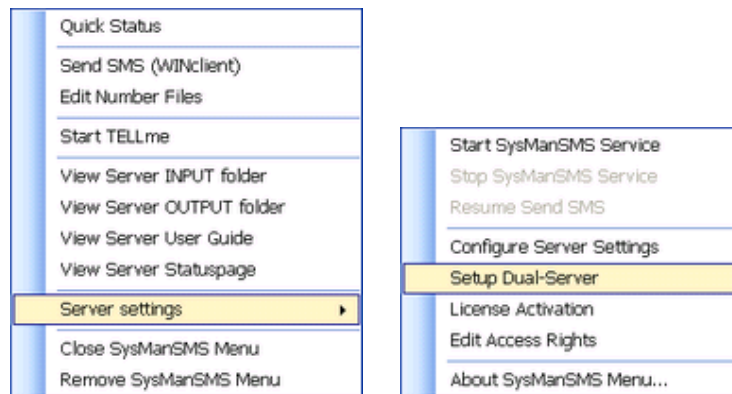
Install your two SysManSMS Servers on two different Workstations or Servers. Carefully follow the installation guide; make sure you fully test the send/receive functionality.

Note: To make failover between two GSM operators, make sure your GSM devices contains SIM cards from different operators. (This can be changed at any time)

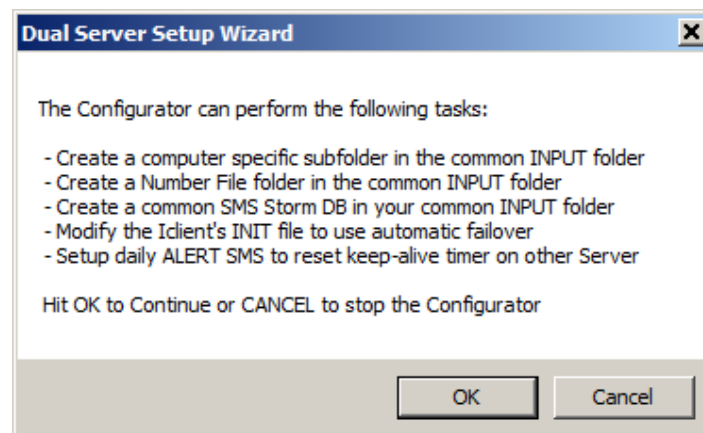
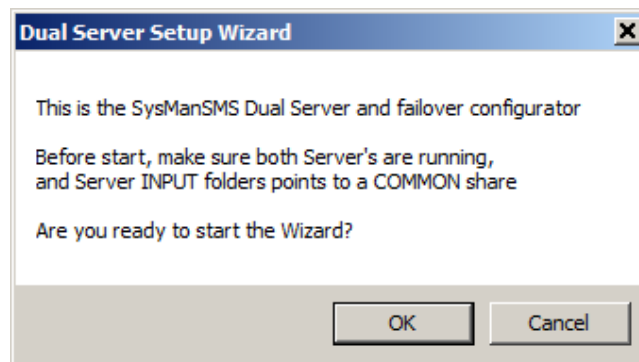
Also make sure the accounts using SysManSMS send clients, has access to SysManSMS Server's by either using domain account or accounts with same username/password. If firewall involved, you may need to open ports NetBios/Named Pipes (139/445)

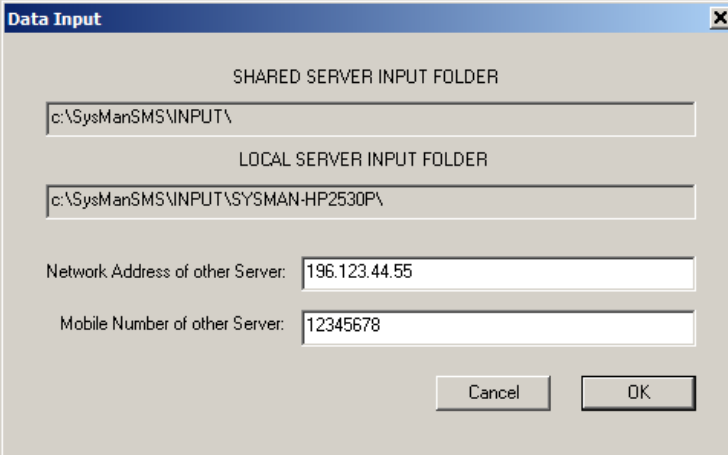
## CONFIGURING FAILOVER WITH THE DUAL SERVER WIZARD

For easy setup of a dual server configuration, you run the Setup Dual-Server Wizard on both servers. Start the *Setup Dual-Server Wizard* from the SysManSMS desktop status menu



Start the Dual-Server Wizard from SysManSMS menu or run from Utilities Folder



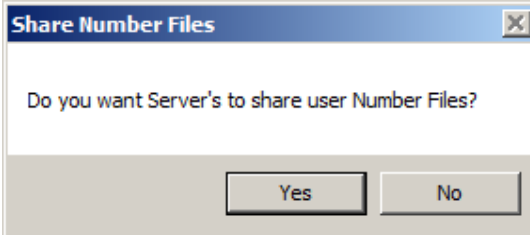


The 'Data Input' dialog box is used for configuring server input folders and other server details. It contains the following fields:

- SHARED SERVER INPUT FOLDER: c:\SysManSMS\INPUT\
- LOCAL SERVER INPUT FOLDER: c:\SysManSMS\INPUT\SYSMAN-HP2530P\
- Network Address of other Server: 196.123.44.55
- Mobile Number of other Server: 12345678

Buttons: Cancel, OK

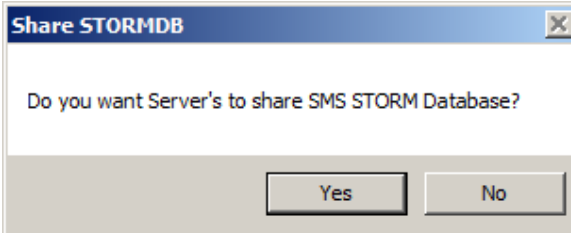
Enter name or IP address of the *other* Server in addition to the *other* Servers Mobile number



The 'Share Number Files' dialog box asks: "Do you want Server's to share user Number Files?"

Buttons: Yes, No

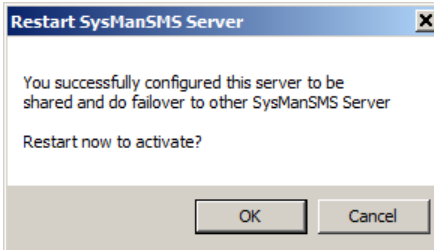
Common Number Files will make it easier to maintain all files in one place



The 'Share STORMDB' dialog box asks: "Do you want Server's to share SMS STORM Database?"

Buttons: Yes, No

A common SMS STORM Database will handle SMS Storm counters as one DB for both server



The 'Restart SysManSMS Server' dialog box displays the following message: "You successfully configured this server to be shared and do failover to other SysManSMS Server. Restart now to activate?"

Buttons: OK, Cancel

**You have now performed the automatic setup tasks  
After restarting the SysManSMS Server, your new settings will be active.**

## SETUP CLIENTS ON OTHER PC'S TO USE SERVER FAILOVER

The Setup Dual-Server Wizard altered the server based Iclient's to use failover.

If you got SysManSMS Client only installations in your network, you will need to manually modify each Iclient's .ini file.

On each SysManSMS remote client installation edit the SysManSMS\_Iclient.ini files to have one primary and one alternative SysManSMS Server gateway route:

```
!
! SYSMANSMS_ICLIENT.INI
! Versjon: 7.1-4 - 08-NOV-2008
!
! This is the parameter file for SysManSMS_Iclient.
! It is read at start of program and contains information
! about client name and the sms server's address.
!!!!!!!!!!!!!!!!!!!!!!!!!!!!!!!!!!!!!!!!!!!!!!!!!!!!!!!!!!!!!!!!!!!!!!
!
! Client name (one word)
! If this is set to "Computername" (default) the name of your
! computer will be used as client name.
!
Computername
!
!!!!!!!!!!!!!!!!!!!!!!!!!!!!!!!!!!!!!!!!!!!!!!!!!!!!!!!!!!!!!!!!!!!!!!
!
! This client communicates with one or two SysManSMS Server(s) for
! sending and receiving SMS messages. You have to specify the name
! of your SMS server(s) for the client to find it on the network.
!
! If this is a remote CLIENT installation, default name will be taken from registry
! NOTE: Any settings other than "." in this file, will override value from registry
!
! SPECIFY AN ALTERNATIVE SMS Server (For sending via if first one failed)
! Specify two server locations, separated with comma (,)
! Example: mainserver,alternativeserver
!
! SPECIFY A SECONDARY SMS Server (For sending the SMS twice via two servers)
! Specify two server locations, separated with colon (:)
! Example: mainserver:secondserver
!
! If client and server are on the same machine, specify "." (period)
! If client and server are on different machines, specify "computername" or IP
!
PrimaryServer,AlternativeServer
!
!!!!!!!!!!!!!!!!!!!!!!!!!!!!!!!!!!!!!!!!!!!!!!!!!!!!!!!!!!!!!!!!!!!!!!
!
```

## SETUP REMOTE CLIENTS TO USE SERVER LOCATED NUMBER FILES

To have remote Iclient's use COMMON Server based Number Files, you must specify this as you define the execution string for the Iclient in your application:

```
SysManSMS_Iclient.exe "This message will send with Server based Number Files" "::NumberFile"
```

For more information on how to send SMS's from Iclient – See the full User Guide.