

Quick Setup Guide



SysManSMS Server

with

HP System Insight Manager 4.2

English version

CONTENT

SysManSMS Server - Background	3
SysManSMS Server - Specifications	3
SysManSMS Server - Installation	3
Setup SysManSMS Server with HP System Insight Manager	4
Monitor HP SIM Services	5
Create a Service Monitor List.....	5
Start a Windows Service from your mobile	5
Stop a Windows Service from your mobile	5
Creation of a custom command in HP SIM	6
Definition of an automatic event handling in HP SIM.....	7

SysManSMS Server - Background

SysManSMS Server is a high quality 2-ways SMS gateway for Microsoft Windows platform. The SysManSMS Server software is a very flexible Windows Service running in background of your PC Workstation or server. With its high quality GSM unit communicating directly with any global GSM network, you got the most reliable SMS communication, with no unsecured internet dependencies!

With its 2-ways capability, you will easily be able to create powerful actions when you send SMS messages into the server. Example: Start .BAT files or any other executable program, request files to be sent to your mobile, or change your default number files (guard lists) of your installation.

SysManSMS Server - Specifications

General features:

- Installs as a *service* under MS Windows
- Written in True 'C' – very compact and effective code
- Server/client architecture - supporting the full LAN
- Windows GUI to advanced common number files

GSM/SMS support :

- 2-way communication with any GSM network
- Standard SIM card, support any GSM operator
- Full destination delivery status support
- Support both standard and flash SMS format
- Full international GSM character set support
- Mobile screen formatting via *new line* function
- If delivery fails, alternative number failover

Server features :

- One server can send up to 1300 messages per hour
- Auto execute of programs on incoming SMS
- Voice call detection support – Send SMS
- Multiple server and multiple GSM net support
- Advanced Watchdog option monitors the PC !
- Advanced Service monitor, monitors important services

Security and logging :

- Rights file can limit mobile access and start of programs
- Activity log for all components
- Account logging for detailed send activities

Send SMS from message files:

- Send free text files to numbers in number files
- Send SysManSMS formatted multi record files
- Automatic message file translation if convert needed

Send SMS from supplied integration clients :

- Easy to use parameter based network utilities
- Sends 2 SMS if message > 160 characters
- Client failover to alternative server/GSM net

Send SMS from MAIL (SMTP Server):

- Built-in secure SMTP Server to receive mails
- Send from "any" mail client to "any" mobile phone
- Send to single number or numbers from number list(s)
- Support Microsoft AUTD messages from Exchange
- Support "flash" SMS and full delivery status handling
- SMTP function monitored and managed by SMS Server

Send SMS from your own applications:

- SDK available, including .net supported functions

Powerful handling of incoming SMS :

- Save message to text, xml or html file
- Auto start of programs as sub processes
- Manipulate number files from your mobile
- Request file content to be returned to mobile
- Start or Stop Windows *services* from your mobile !
- Execute Server administrative commands

NOTE: Functionality is dependent on your license type

For more details please refer to the full SysManSMS Server UserGuide located in the DOC folder of your SysManSMS installation. Alternatively download the latest version from www.sysman.no

SysManSMS Server - Installation

To Install SysManSMS Server on your Windows system, please follow the instructions in the Installation guide included with your distribution kit.

The guide will show you examples on how to send and receive SMS messages in general.

SysMan AS - internet: www.sysman.no – mail: support@sysman.no

Setup SysManSMS Server with HP System Insight Manager

SysManSMS Server can offer the following to your HP SIM installation:

- Secure sending of GSM/SMS messages if your selected event occurs
- Automatic re-redirect to other persons if your primary destination can't receive
- Monitor SIM service; send alert if service stop
- Start or Stop SIM (or other) services from your mobile
- Set new default number file for your ENV client
- Request files (status?) to be sent back to your mobile
- Securely start "any" program on your PC, initiated by an SMS from your mobile
- With the SysManSMS Watchdog option – get an SMS if your whole PC stop !

For operation details – see the full SysManSMS Server UserGuide

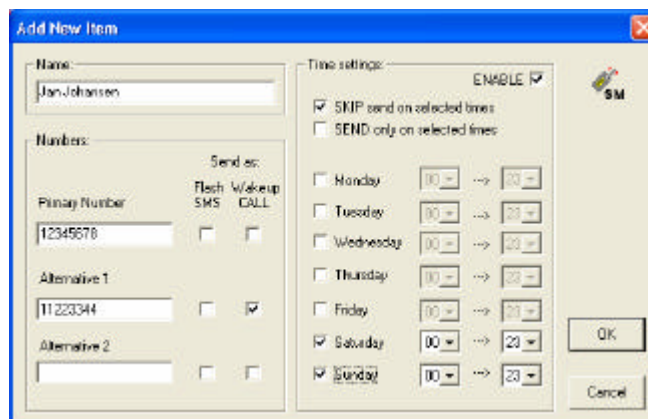
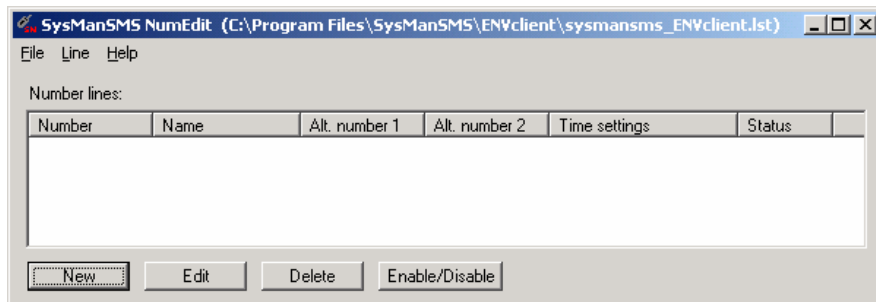
Interface with SIM is very easy to set up. After installation of the SysManSMS Server, you enter one or more mobile numbers in the ENVclients number file, then create a custom command in HP SIM, and finally you define an automatic event handling in HP SIM.

The actually interface between HP SIM and SysManSMS Server, is the client program `SysManSMS_ENVclient.exe`, supplied in the ENVclient folder of your SysManSMS installation. This utility program will be started by the HP SIM event, supplied with selected parameters to be sent out as an SMS text message.

ENVclient can be placed on any Windows PC in your network, and will communicate over the IP network to the SysManSMS Server for sending its SMS messages.

ENVclient uses number files (.LST files) to find its destination mobile numbers for alerts. By manipulating the name of your number files, you are able to send different messages to different people. A parameter starting with a colon (:) can be used to tell the client which number file to use.

The default number file for ENVclient is `SysManSMS_ENVclient.lst`. To edit number files, use the NumEdit tool placed in the Utilities folder.



Monitor HP SIM Services

SysManSMS Server has a built-in capability of monitoring a limited amount of important services on your system. In addition you can use the supplied mobile programs SSTART and SSTOP to start and stop the same services - from your mobile !

Create a Service Monitor List

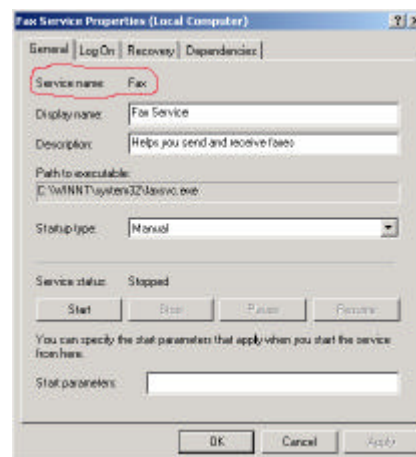
If the file `ServiceMonitor.ini` exist in the GSMserver folder, the SysManSMS Server will read this file, and get the list of up to 6 Windows Service Names to monitor.

The format of this list is one line for each service name. You can in addition to the service name create a *Short Name* to be used as reference for mobile start and stop of the services.

```
! This is the Service Monitor Function INIT file.
!
The HP SIM Service Name,SIM
!
```

The text "The HP SIM Service Name" will tell SysManSMS Server to Monitor the SIM service. In addition you will be able to start or stop the service from a mobile, using SIM as reference.

Note:
The **Service Name** is not the same as the **Display Name** Make sure to use the **Service Name** in the **ServiceMonitor.ini** file



If the state of a service is changed, the SysManSMS Server will create a message file called `servicename.txt` in the servers INPUT folder, containing information on the event.

By default this message will be sent to all numbers in the `SysManSMS_Iclient.lst` file, in Iclient folder. To change this, you simply create a number file called `servicename.lst` in the Iclient folder.

Start a Windows Service from your mobile

Using the Short Name created in your `ServiceMonitor.ini` file as reference, you can send a start command to the service by use of an SMS message. NOTE: Requires ENTERPRISE license.

The format of the SMS should be: `SSTART shortname`. Example: **SSTART SIM**

The program `sstart.exe` is located in the servers *Programs* folder. You can rename it to what you like.

Stop a Windows Service from your mobile

Using the Short Name created in your `ServiceMonitor.ini` file as reference, you can send a stop command to the service by use of an SMS message. NOTE: Requires ENTERPRISE license.

The format of the SMS should be: `SSTOP shortname`. Example: **SSTOP SIM**

The program `sstop.exe` is located in the servers *Programs* folder. You can rename it to what you like.

Creation of a custom command in HP SIM

HP SIM 4.2 uses OpenSSH. This can cause authentication problems. Use the same account you used when installing HP SIM for creating the custom command. OpenSSH assumes that this is the local account called 'Administrator'. For more information refer to the HP white paper 'Secure Shell (SSH) in HP Systems Insight Manager (pdf)', located on the HP website.

For creating the custom command click Tools -> Custom Commands -> New Custom Command...

Enter a name, description and comment. In the field 'Command (Executable path and file name):' enter the command line, you verified in step 1. In this case:

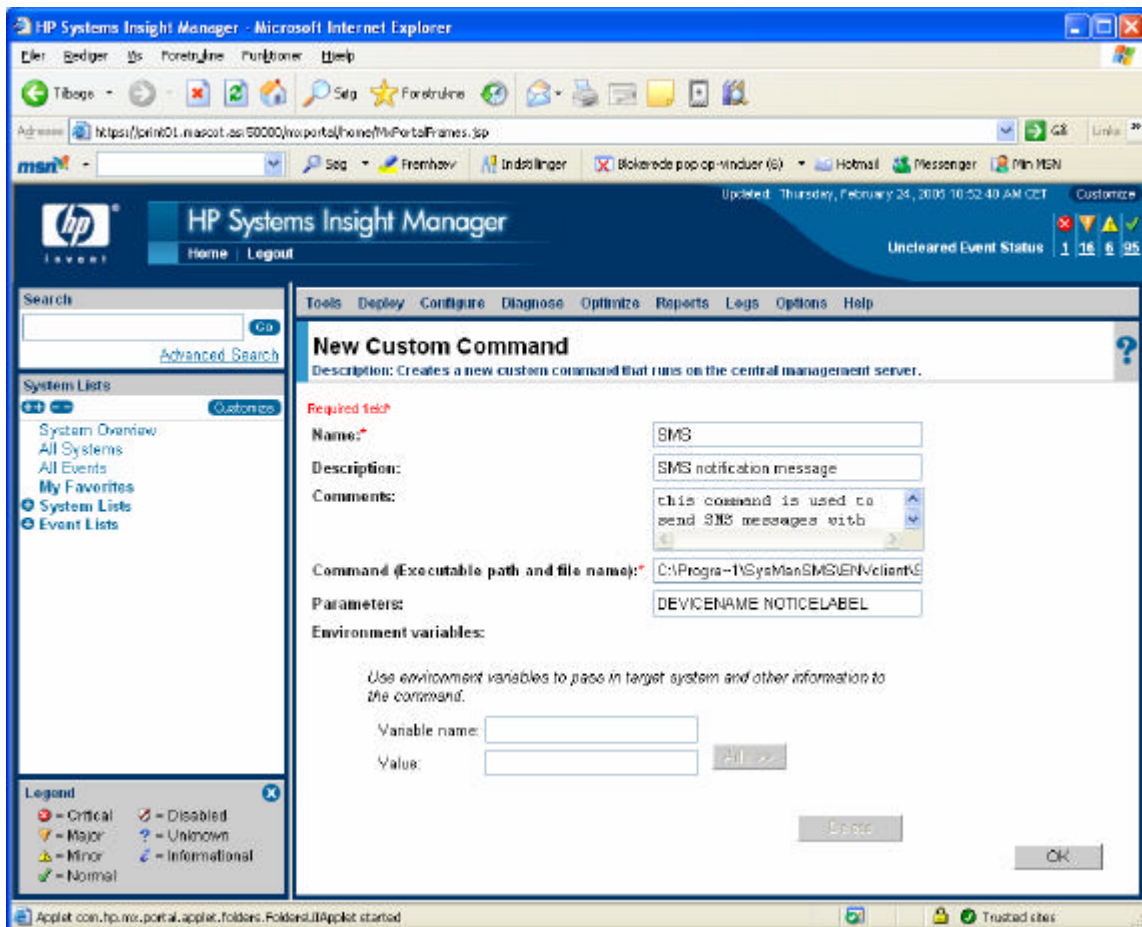
```
C:\Progra~1\SysManSMS\ENVclient\SysManSMS_ENVclient.exe
```

In the field 'Parameters' you can enter 'environment variables for custom tools' or self-defined parameters. 'Environment variables for custom tools' are parameters defined by HP, which will return a certain value, e.g. the machine name of the computer, which triggered the event or an error description. (NOTICELABEL, NOTICESTATE, NOTICEPLAINTEXT, NOTICERAWDATA, NOTICESEVERITYSTR, NOTICESEVERITY, NOTICEQUERYNAME, DEVICENAME, DEVICEIPADDRESSCOUNT, DEVICEIPADDRESSCOUNT, COMPUTERTNAME.)

A good suggestion is DEVICENAME NOTICELABEL. See HP Website for more details.

For self-defined parameters you can enter value by entering the parameter in the 'Variable name' field and the value in the 'value' field. Click 'Set' and repeat the process, if you have more self-defined parameters.

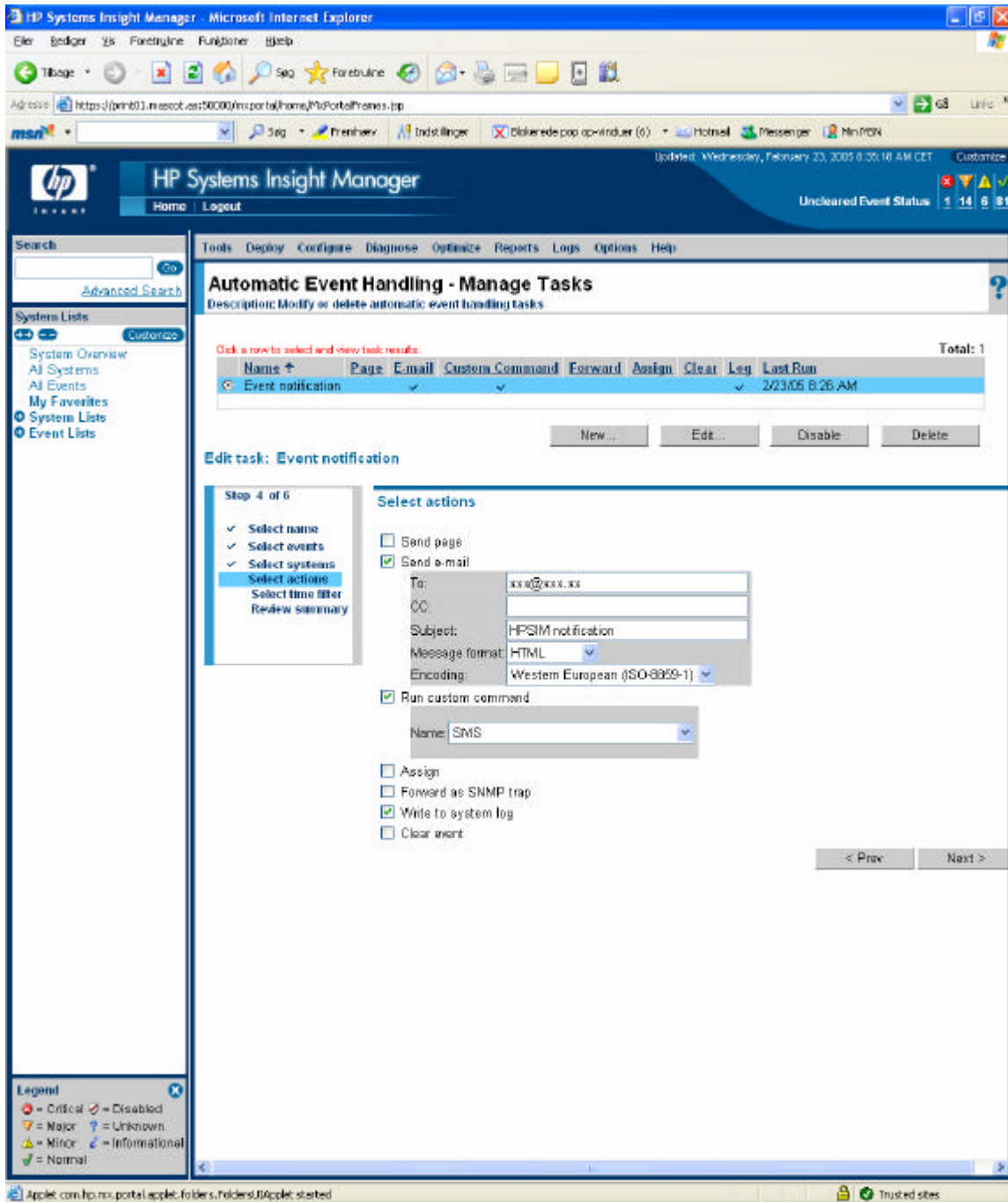
Finally click Ok to create the custom command. Picture 1 shows the screen:



Picture 1: New custom command.

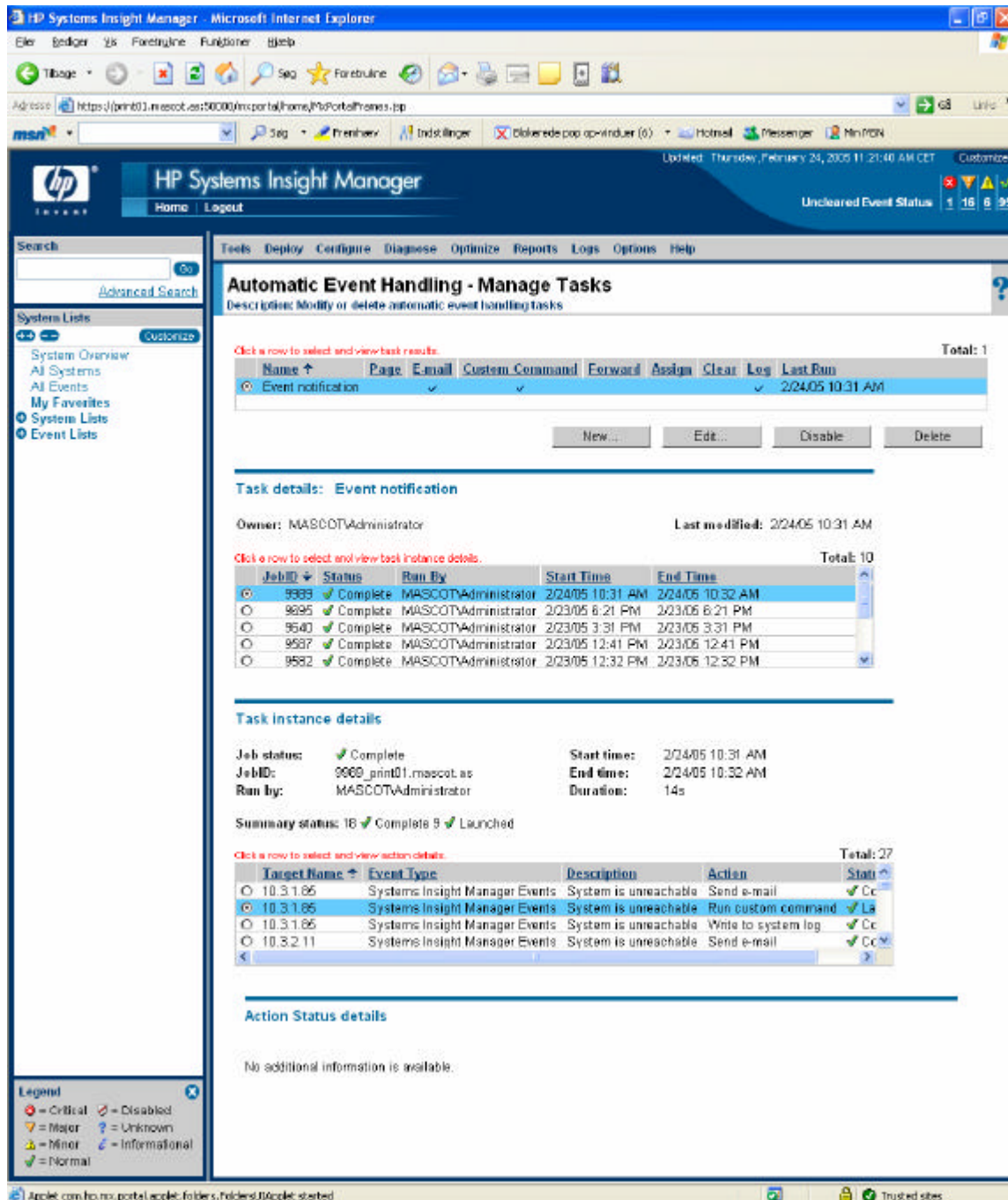
Definition of an automatic event handling in HP SIM

Finally the task, which triggers the SMS message, has to be created: Click Options -> Events -> Automatic Event Handling -> New Task... The wizard consists of 6 steps. You start with naming the task, and then choose the events and systems which should trigger a SMS message. In Step 4 you select the 'run custom command' action and select the custom command, which you created earlier in the 'name' field. Picture 2 shows the screen for the action settings. Finish the wizard and create an event, e.g. by logging on HP SIM with a wrong username.



Picture 2: Action settings in the automatic event handling wizard.

You can check for error messages by clicking Options -> Events -> Automatic Event Handling -> Manage Tasks... Mark the line in the 'Task details: Event notification' section. Then mark the line in the 'Task instance details' section, which has an action 'run custom command'. If there were problems, you can see them in the 'Action status details' section. See picture 3.



Picture 3: Checking the result of the custom command.